



Energy Storage for a Better Tomorrow



Whatsapp



Website



Facebook



Youtube

Xiamen Lefor energy storage Technology Co.,Ltd.

✉ [sale05@leforsolar.com](mailto:sale05@leforsolar.com)

🌐 [www.leforsolar.com](http://www.leforsolar.com)

☎ +86 18760180338

📍 Add: Unit 1104-1, No.365 Chengyi Street, Software Park Three, Torch High-tech Zone, Xiamen



# SMART ENERGY STORAGE GREEN FUTURE

Safe · Efficient · Intelligent · Reliable

Empowering a sustainable future with innovative energy storage solutions.



High Voltage  
Battery Cabinet

Modular  
Battery Rack

All-in-One  
Energy Storage System

Wall-Mounted  
Battery

Stackable  
Battery

Floor-Standing  
Battery

2026

## Product Catalog

Xiamen Lefor energy storage Technology Co.,Ltd.

Delivering Leading Energy Storage Solutions to  
Global Partners

# About LeforEss

Founded in 2016, **LeforEss** is deeply committed to the renewable energy industry. Unlike traditional equipment suppliers, we are an integrated technology company specializing in the in-house R&D, design, and manufacturing of lithium batteries, solar panels, and solar inverters — combined with turnkey photovoltaic (PV) system services.

With our unique ability to produce all three core components, **LeforEss** ensures seamless synergy between power generation (panels), power conversion (inverters), and power storage (batteries). Whether for residential storage, commercial & industrial PV, or off-grid systems, we deliver tailored, plug-and-play solutions that make clean energy simple, efficient, and reliable.

What Sets Us Apart:

#### Complete Pv system:

All three core components developed in-house for optimal system compatibility.

#### Cost & Efficiency Gains:

Reduce procurement complexity, lower costs, and streamline after-sales support.

#### Global Certifications:

Full range of products certified to international standards, trusted worldwide.

Founded 

2016



100+  
Employee



20000+  
Users

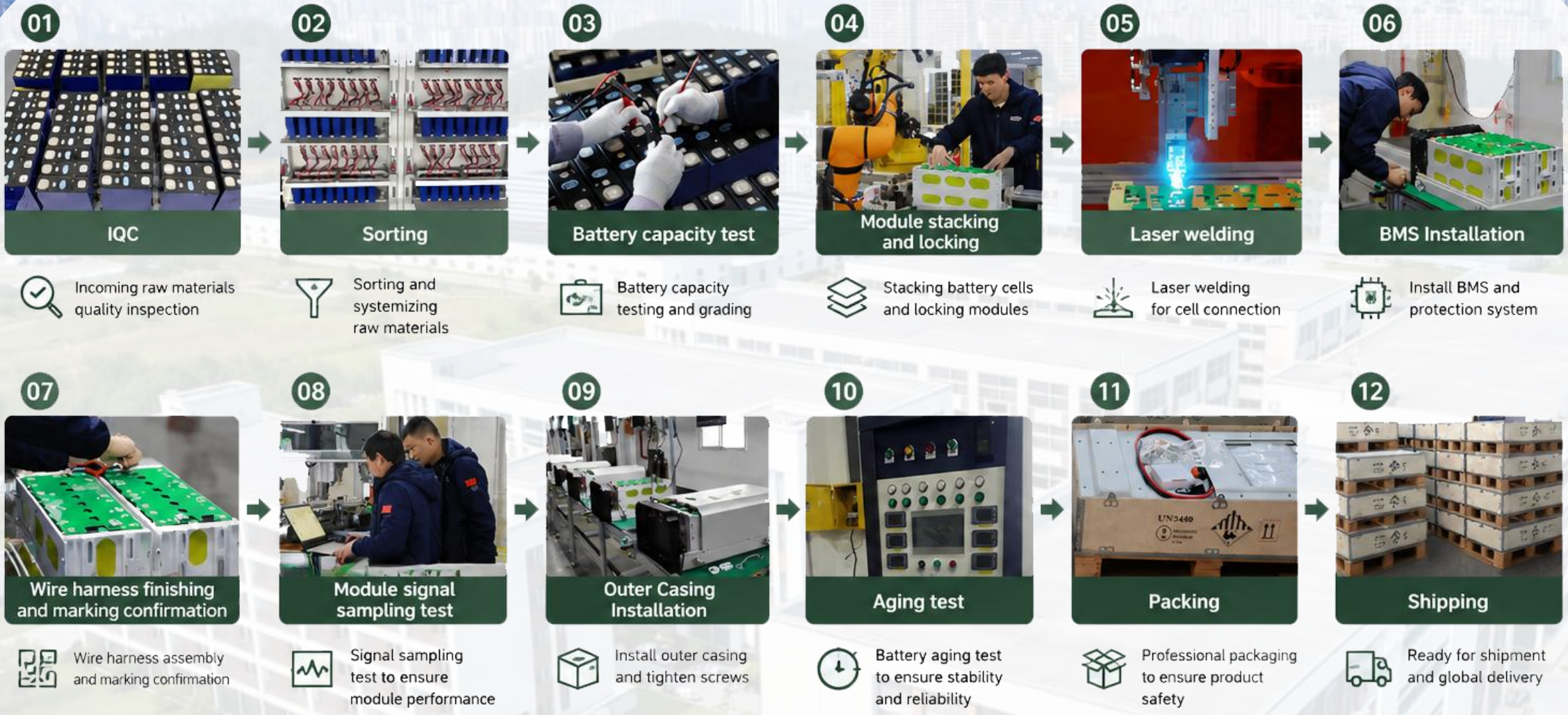


80+  
Covered  
Countries



10Years  
Battery  
Experience

# Manufacturing Strength



**HIGH QUALITY**  
Strict quality control throughout the process

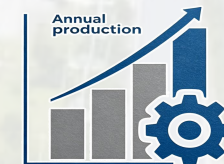
**HIGH SAFETY**  
Multiple protection for safe and reliable use

**HIGH EFFICIENCY**  
Advanced equipment and efficient production

**GLOBAL DELIVERY**  
Standardized production and rapid global delivery



**18000m<sup>2</sup>  
Manufacture Base**



**2+GWH  
Annual Production Capacity**



**Authoritative  
Certification**



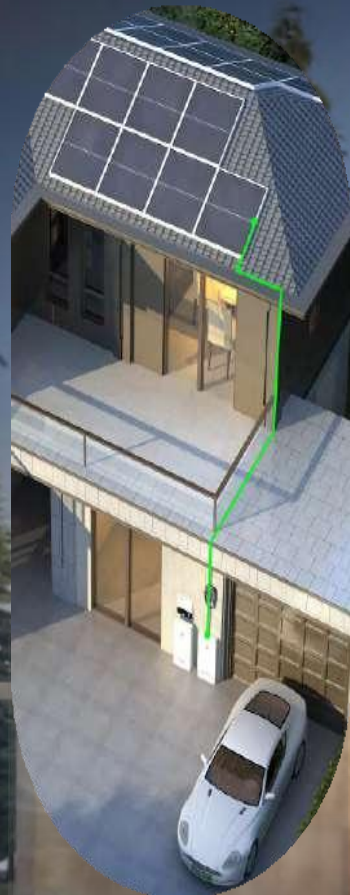
**Automatic  
Production Line**

# PRODUCTION CENTER



# Product Applications

Residence



Data Center



Power Plant



Commercial & Industrial



EV Charging Station



# ENERGY STORAGE SOLUTIONS

Powering a Sustainable Future

LeforEss delivers safe, reliable, and high-performance energy storage systems for residential, commercial and industrial applications.



**High Safety**  
Multi-layer protection and intelligent BMS



**Long Life**  
6000+ cycles  
10+ years design life



**High Efficiency**  
Up to 95% round-trip efficiency



**Flexible Expansion**  
Modular design for easy capacity scaling

## OUR PRODUCT SERIES

### LOW VOLTAGE LITHIUM ION BATTERY

- Wall-Mounted
- Stacked
- Rack-Mounted

Flexible options for residential and small commercial energy storage.



### HIGH VOLTAGE ENERGY STORAGE SYSTEM

- ESS Cabinet
- Rack-Mounted
- Stacked

Scalable and high-performance solutions for commercial, industrial and utility-scale applications.

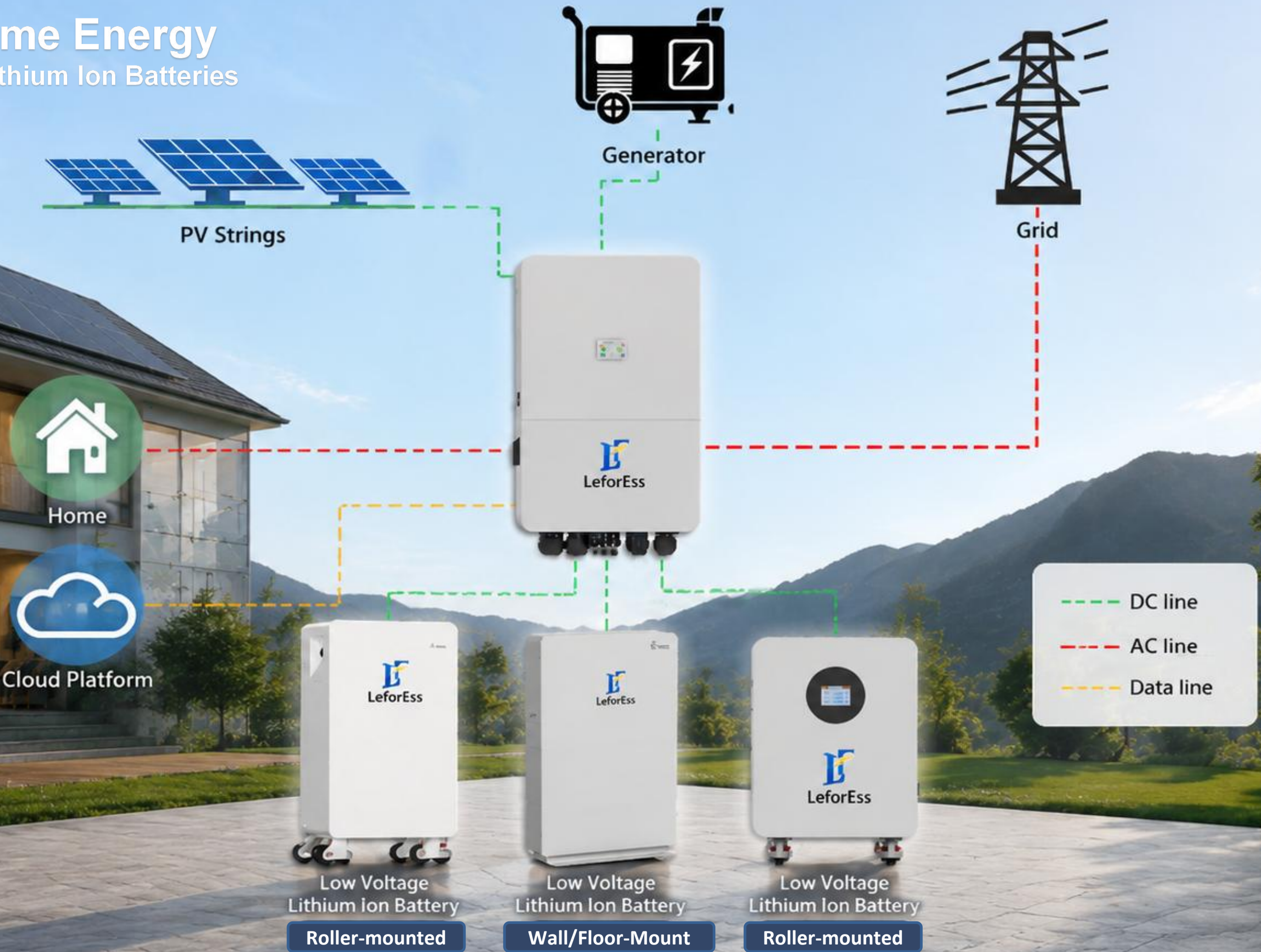


## APPLICATIONS

- Residential Energy Storage
- Commercial & Industrial Energy Storage
- Renewable Energy Integration
- Microgrid & Off-grid Solutions
- Backup Power & Energy Management

# Smart Home Energy

Low Voltage Lithium Ion Batteries



## Low Voltage Lithium Ion Battery



**Safty LiFePO4 & Smart BMS**

**High Charge&Discharge Current**

**Support Multiple Parallel Connection**



**UN38.3**

**51.2V100Ah 5KWH**

Rechargeable Lithium Iron Phosphate Battery



**Easy Install**  
Plug & Play



**Lifepo4**  
Better, Longer & Safer



**Waterproof**  
IP 54



**Wide Compatible**  
Multi Brand Inverter



**Intelligent**  
Smart & Secure



**Long Life Cycles**  
>6000Times

**Product Specifications**

Model	ELESHELL 5K
Battery Type	LiFePO4
Norminal Energy	5.12KWH
Norminal Voltage	51.2V
Norminal Capacity	100Ah
Max Charge/Discharge Current	75/100A
Max.Number of Parallel	15
Protection Level	IP54
Communications	RS485/CAN/RS232
Cycle Life (80%DOD,25°C)	>6000Cylces
Installation	Wall or floor mounting
Dimension (H*W*D mm)	610*370*163
Weight (KG)	44
Operating Temperature Range (°C)	0-55
Temperature.Control	Natrual Cooling
Storage Temperature	Charge:5°C~55°C;Discharge:-15°C~55°C
Certification	UN38 .3 ,CE ,IEC62619 ,MSDS ,ROHS

**Product Detail**



Battery Pack



- 1.Power Interface
- 2.Battery Power Button
- 3.Communication Ports
- 4.Dialing Ports

163mm

370mm

610mm



Laser Welding Technology

Long service life

Cells Active Balance Technology



51.2V200Ah 10.24KWH

Rechargeable Lithium Iron Phosphate Battery



Easy Install  
Plug & Play



Wide Compatible  
Multi Brand Inverter



Lifepo4  
Better, Longer  
& Safer



Intelligent  
Smart & Secure



Waterproof  
IP 65



Long Life Cycles  
>6000Times



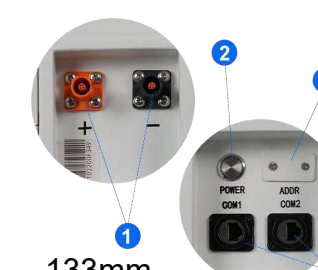
Product Specifications

Model	ELESHELL 10.2K
Battery Type	LiFePO4
Norminal Energy	10.24KWH
Norminal Voltage	51.2V
Norminal Capacity	200Ah
Max Charge/Discharge Current	100A
Max.Number of Parallel	15
Protection Level	IP65
Communications	RS485/CAN/RS232
Cycle Life (80%DOD,25°C)	>6000Cylces
Installation	Wall or floor mounting
Dimension (H*W*D mm)	871.1*519*133
Weight (KG)	92
Operating Temperature Range (°C)	0-55
Temperature.Control	Natrual Cooling
Storage Temperature	Charge:5°C~55°C;Discharge:-15°C~55°C
Certification	UN38 .3 ,CE-EMC ,IEC62619 ,MSDS ,ROHS

Product Detail



Battery Pack



- 1.Power Interface
- 2.Battery Power Button
- 3.Communication Ports
- 4.Dialing Ports





Laser Welding Technology

Support High Charge & Discharge Current

High Safety LiFePO4



Product Specifications	
Model	ELESHELL 16K
Battery Type	LiFePO4
Norminal Energy	16KWH
Norminal Voltage	51.2V
Norminal Capacity	314Ah
Max Charge/Discharge Current	200A
Max.Number of Parallel	15
Protection Level	IP54
Communications	RS485/CAN/RS232
Cycle Life (80%DOD,25℃)	>8000 Cycle
Installation	Floor mounting (Moveable Roller)
Dimension (H*W*D mm)	750*412*235
Weight(KG)	121
Operating Temperature Range (℃)	0-55
Temperature.Control	Natrual Cooling
Storage Temperature	Charge:5℃~55℃;Discharge:-15℃-55℃
Certification	UN38 .3 ,CE-EMC ,IEC62619 ,MSDS ,ROHS

51.2V314Ah 16KWH

Rechargeable Lithium Iron Phosphate Battery



Easy Install  
Plug & Play



Wide Compatible  
Multi Brand Inverter



Convenient  
Roller  
Moveable



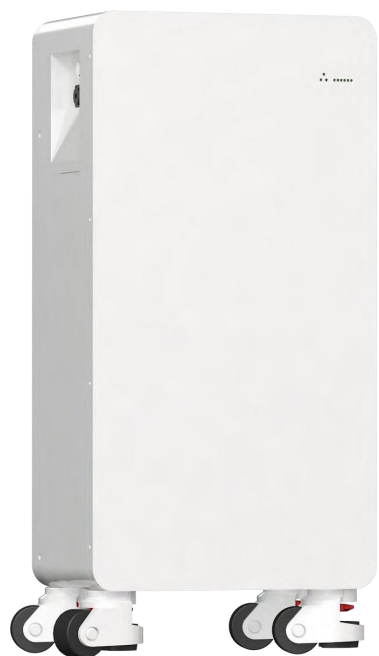
Intelligent  
Smart & Secure



Waterproof  
IP 54



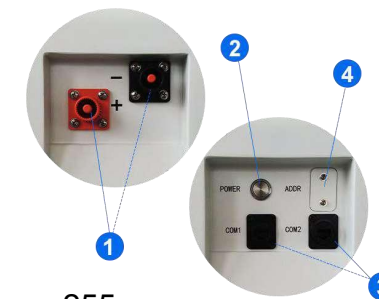
Long Life Cycles  
>8000Times



## Product Detail



Battery Pack



- 1.Power Interface
- 2.Battery Power Button
- 3.Communication Ports
- 4.Dialing Ports

255mm



750mm

415mm



### Product Specifications

Model	LF-THS 16K
Battery Type	LiFePO4
Norminal Energy	16KWH
Norminal Voltage	51.2V
Norminal Capacity	314Ah
Max Charge/Discharge Current	200A
Max.Number of Parallel	16
Protection Level	IP20
Communications	RS485/CAN
Cycle Life (80%DOD,25℃)	>8000 Cycle
Installation	Floor mounting (Moveable Roller)
Dimension (H*W*D mm)	717*500*240
Weight(KG)	129
Operating Temperature Range (℃)	0-55
Temperature.Control	Natrual Cooling
Storage Temperature	0℃ ~ 45℃ @ 60%±25% RH
Certification	IEC62619-CB,CE-EMC,UN38 .3,MSDS

**51.2V314Ah 16KWH**

Rechargeable Lithium Iron Phosphate Battery



**Easy Install**  
Plug & Play



**Wide Compatible**  
Multi Brand Inverter



**Convenient**  
Roller  
Moveable



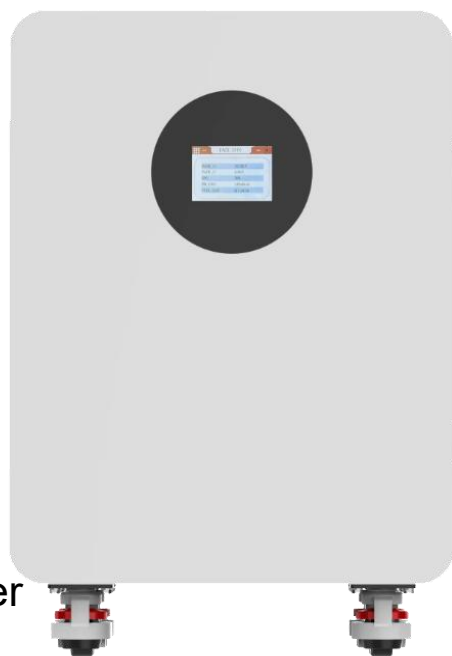
**Intelligent**  
Smart & Secure



**Lifepo4**  
Better, Longer  
& Safer



**Long Life Cycles**  
>8000Times



### Product Detail

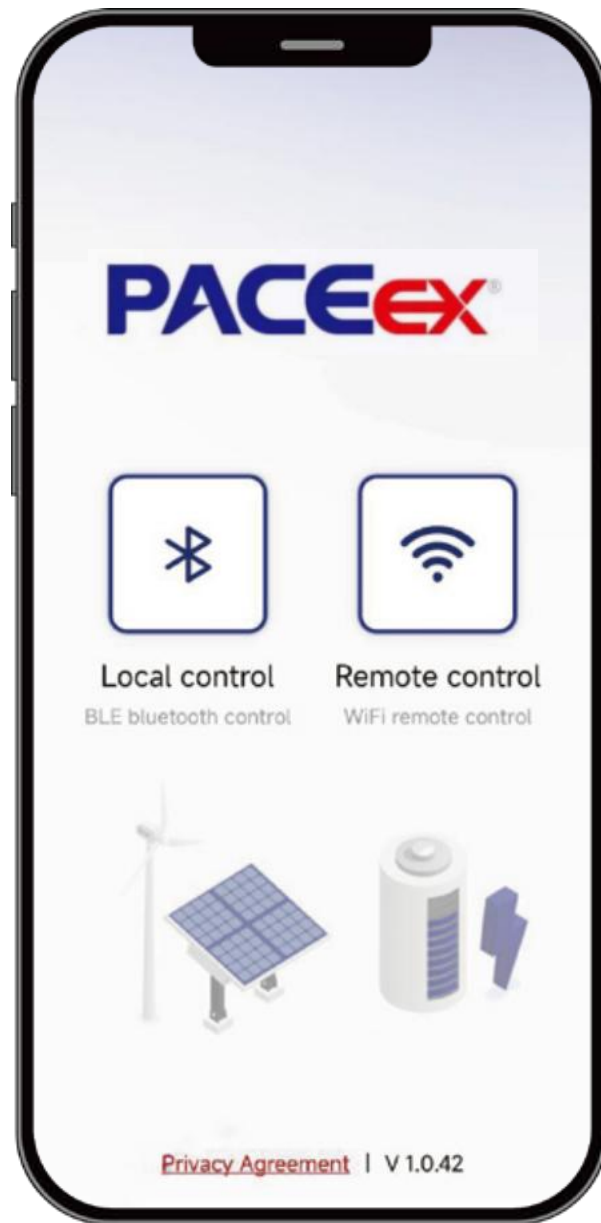


# Low Voltage Wifi Monitoring



## Smart Energy Management

Built-in WiFi monitoring device for batteries: supports local Bluetooth and WiFi remote control. Allows online monitoring, maintenance, local commissioning, and firmware upgrades



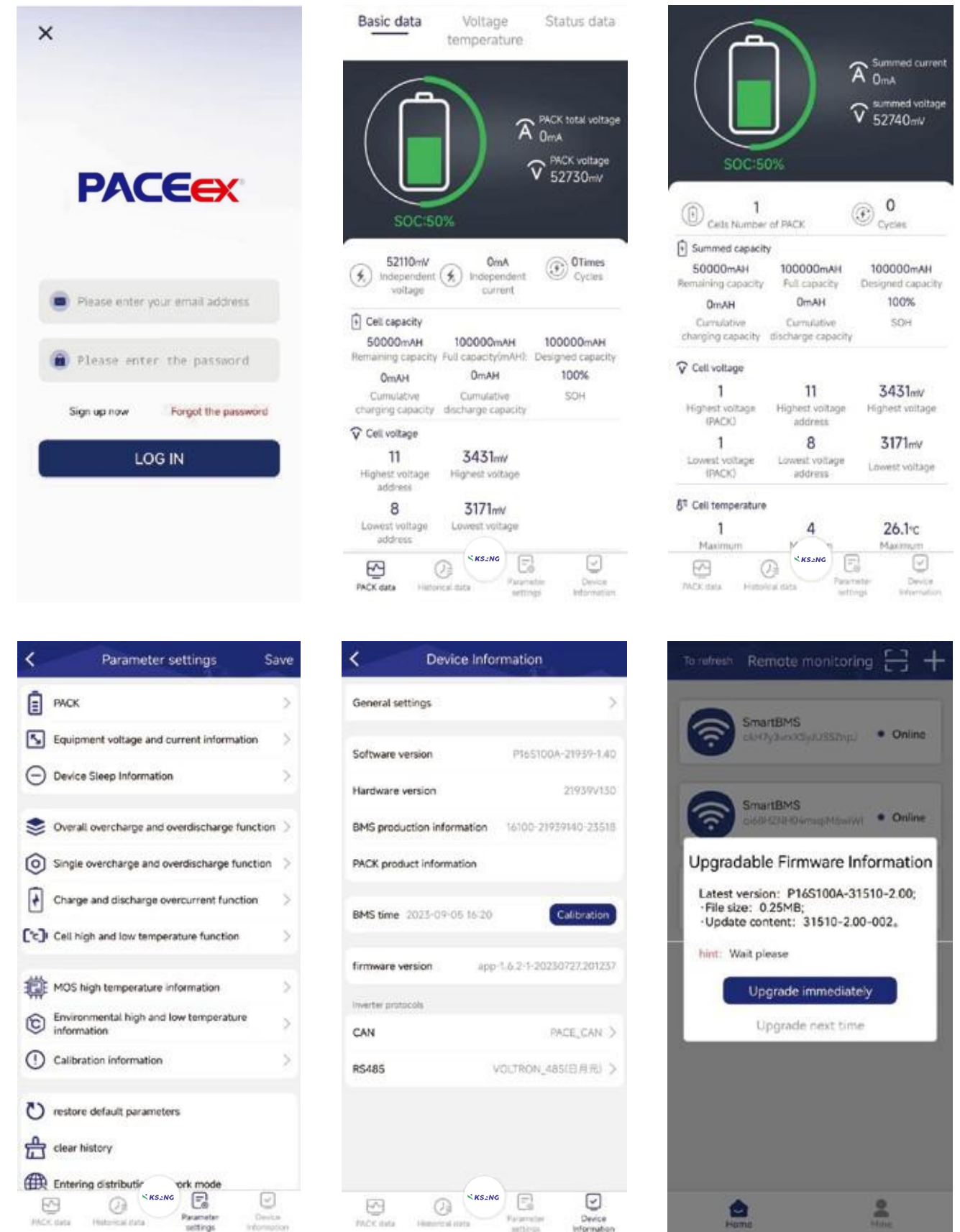
## Local Control

BLE Bluetooth communication with your battery when you're nearby. No login required—it's ready to use

## Remote Control

With WiFi communications, your batteries connect wirelessly to the monitoring platform. Access historical data from a centralized data center, and remotely monitor and control your battery via the app

# App User Interface Display



# COMMERCIAL & INDUSTRIAL SOLAR POWER SYSTEM

Powering Businesses. Sustaining the Future.

-  **Reduce Energy Costs**  
Lower your electricity bills with clean solar energy.
-  **Increase Energy Independence**  
Generate your own power and protect against rising energy costs.
-  **Sustainable & Green**  
Reduce your carbon footprint and support a cleaner planet.
-  **Reliable & Low Maintenance**  
High-performance systems built for long-term reliability.



**CUSTOM ENGINEERING**  
Tailored solutions for your business needs.



**PROFESSIONAL INSTALLATION**  
Expert installation with quality assurance.

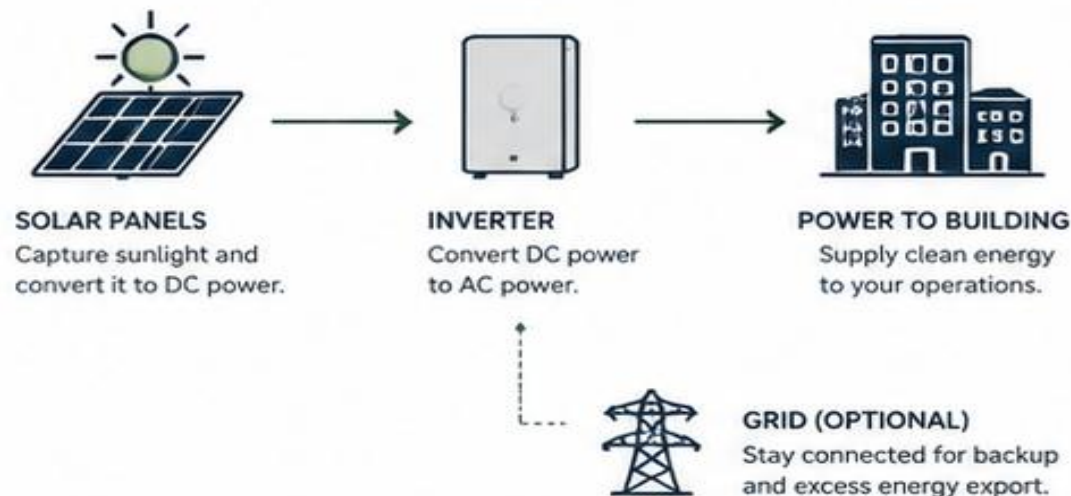


**SMART MONITORING**  
Real-time monitoring for maximum performance.



**AFTER-SALES SUPPORT**  
Dedicated support for peace of mind.

## HOW IT WORKS



## IDEAL FOR

-  Factories & Warehouses
-  Commercial Buildings
-  Shopping Centers
-  Offices & Institutions
-  Hotels & Resorts
-  Agricultural Facilities

# HIGH VOLTAGE ENERGY STORAGE BATTERY

Safe • Reliable • Efficient • Flexible

Advanced high-voltage battery solutions designed for commercial, industrial and utility-scale energy storage applications.



High Safety



Long Life



High Efficiency



Flexible Expansion





### ● Reliable – Power You Can Trust

Built with premium Lithium Iron Phosphate (LFP) cells for ultimate safety, high energy density, low self-discharge, zero memory effect — and a protective cut-off switch for complete peace of mind.



### ● Flexible – Scales to Your Needs

Choose from multiple capacity packs. Start with one unit, expand to 17 units, or connect up to 4 sets in parallel for a massive capacity power. Simple rack or cabinet installation — saves space, cuts costs.



### ● Smart – Intelligent Energy Management

- Advanced BMS actively monitors voltage, current, and temperature, auto-adjusting power for optimal performance.
- Clear display + SOC indicator lights give real-time status at a glance. Switch communication protocols easily.
- Built-in WiFi + mobile app — monitor, adjust, and upgrade from anywhere.
- Smart fan + cooling shell design keeps the battery running cool and safe.



### ● Cooperation – Built Your Way

Full support for customization — OEM/ODM ready. Your brand, your specs.



### ● Quality Assurance – Long-Term Confidence

5-year free warranty worry-free energy storage.



Overcharge Protection



Overdischarge Protection



Overcurrent Protection



Temperature Protection



Short Circuit Protection



Balanced Protection

Model	ET-51.2V100Ah-HV	
BASIC INFORMATION	Cell Chemistry	LiFePO4
	Module Energy	5.12(kWh)
	Module Nominal Voltage	51.2(V)
	Module Capacity	100(Ah)
	Module Dimension	355*567*150(W/D/H,mm)
	Module Weight Approximate	42.5(kg)
ELECTRICAL PARAMETERS	Battery Module Qty In Series	4-10(Optional)
	System Nominal Voltage	204.8-512(V)
	System Operating Voltage	185.6~576(V)
	System Energy	20.48-51.2(kWh)
	System Usable Energy	18.43-46.08(kWh)
	Charge/Discharge Current	Recommend: 50(A)   Max: 50(A)
	Working Temperature	0~60(°C)
	Cooling Mode	Natural Cooling
	Communication Port	CAN, RS485
	Humidity	5%~85%RH
	Altitude	≤2000m
	IP Rating of Enclosure	IP21
	DIMENSION&WEIGHT	Dimension
Weight Approximate		185-440(kg)
INSTALLATION&STORAGE	Installation Location	Stack Mounting, Iron Frame Mounting
	Storage Temperature	0~35(°C)
	Recommend Depth of Discharge	90%
RELIABILITY	Cycle Life	≥6000 times
	Warranty	5 years
	Certification	CE, MSDS, UN38.3
Note:The current is affected by temperature and SOC		

Model	ET-51.2V200Ah-HV	
BASIC INFORMATION	Cell Chemistry	LiFePO4
	Module Energy	10.24(kWh)
	Module Nominal Voltage	51.2(V)
	Module Capacity	200(Ah)
	Module Dimension	383*605*240(W/D/H,mm)
	Module Weight Approximate	77(kg)
ELECTRICAL PARAMETERS	Battery Module Qty In Series	4-10(Optional)
	System Nominal Voltage	204.8-512(V)
	System Operating Voltage	185.6~576(V)
	System Energy	40.9-102.4(kWh)
	System Usable Energy	36.86~92.16(kWh)
	Charge/Discharge Current	Recommend: 80(A)   Max: 100(A)
	Working Temperature	0~60(°C)
	Cooling Mode	Natural Cooling
	Communication Port	CAN, RS485
	Humidity	5%~85%RH
	Altitude	≤2000m
	IP Rating of Enclosure	IP21
	DIMENSION&WEIGHT	Dimension
Weight Approximate		323-785(kg)
INSTALLATION&STORAGE	Installation Location	Stack Mounting, Iron Frame Mounting
	Storage Temperature	0~35(°C)
	Recommend Depth of Discharge	90%
RELIABILITY	Cycle Life	≥6000 times
	Warranty	5years
	Certification	CE, MSDS, UN38.3
Note:The current is affected by temperature and SOC		



### SUPERIOR LFP CELL TECHNOLOGY

- High energy density, ultra-low self-discharge, no memory effect
- Built-in protective cut-off switch for enhanced safety



### FLEXIBLE & EXPANDABLE DESIGN

- Single unit expands to up to 17 units (243-272 kWh total capacity)
- Stackable modules – small footprint, lower economic cost



### SMART BMS WITH TOUCHSCREEN

- Real-time monitoring of voltage, current, temperature
- Automatically adjusts charge/discharge power
- Touchscreen display: battery status, data, fault diagnosis & management



### STABLE THERMAL MANAGEMENT

- Air-cooled system with cooling fan and heat sink
- Maintains optimal temperature under continuous high-load operation
- Extends battery life and ensures operational stability



### CUSTOMIZATION READY

- OEM / ODM services available



### QUALITY ASSURANCE

- 5-year warranty



	Model	51.2V280Ah-HV	51.2V314Ah-HV
BASIC INFORMATION	Cell Chemistry	LiFePO4	
	Module Energy	14.34(kWh)	16.08(kWh)
	Module Nominal Voltage	51.2(V)	
	Module Capacity	280(Ah)	314(Ah)
	Module Dimension	734*550*220(W/D/H,mm)	
	Module Weight Approximate	110(kg)	118(kg)
ELECTRICAL PARAMETERS	Battery Module Qty In Series	5-14(Optional)	
	System Nominal Voltage	256-716.8(V)	
	System Operating Voltage	232~649.6(V)	
	System Energy	71.68-200.7(kWh)	80.3-225.08(kWh)
	System Usable Energy	64.51-180.63(kWh)	72.34-202.57(kWh)
	Charge/Discharge Current	Recommend: 140(A)   Max: 170(A)	Recommend: 160(A)   Max: 200(A)
	Working Temperature	-10~55(°C)	
	Cooling Mode	Fan Cooling	
	Communication Port	CAN, RS485	
	Humidity	5%~95%RH	
	Altitude	≤2000m	
DIMENSION & WEIGHT	IP Rating of Enclosure	IP20	
	Dimension	610*734*1430~1562(W/D/H,mm)	
INSTALLATION & STORAGE	Weight Approximate	572-1562(kg)	612-1674(kg)
	Installation Location	Stack Mounting, Iron Frame Mounting	
RELIABILITY	Storage Temperature	0~35(°C)	
	Recommend Depth of Discharge	90%	
	Cycle Life	≥8000 times	
	Warranty	5 years	
	Certification	CE, UN38.3, MSDS	
Note:The current is affected by temperature and SOC			

# HIGH VOLTAGE WIFI MONITORING



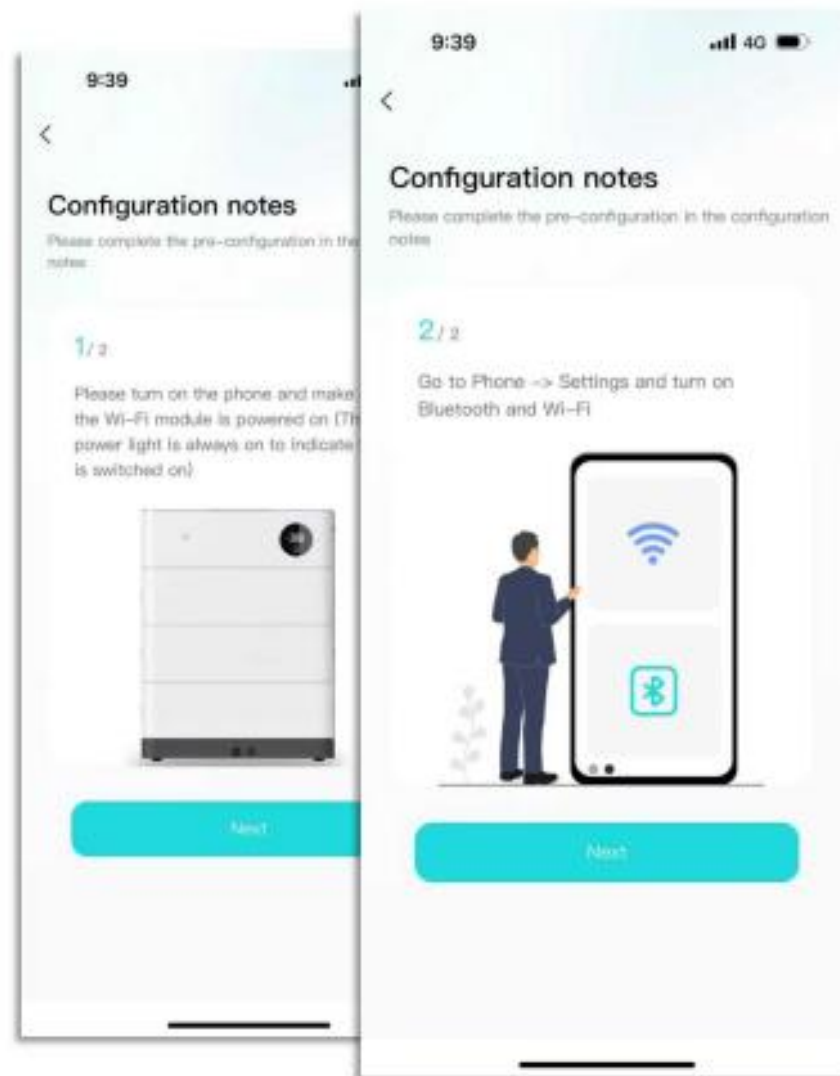
Built-in WiFi monitoring device for batteries:  
 supports local Bluetooth and WiFi remote control. Allows online monitoring, maintenance, local commissioning, and firmware upgrades

## Preparation Before Network Distribution

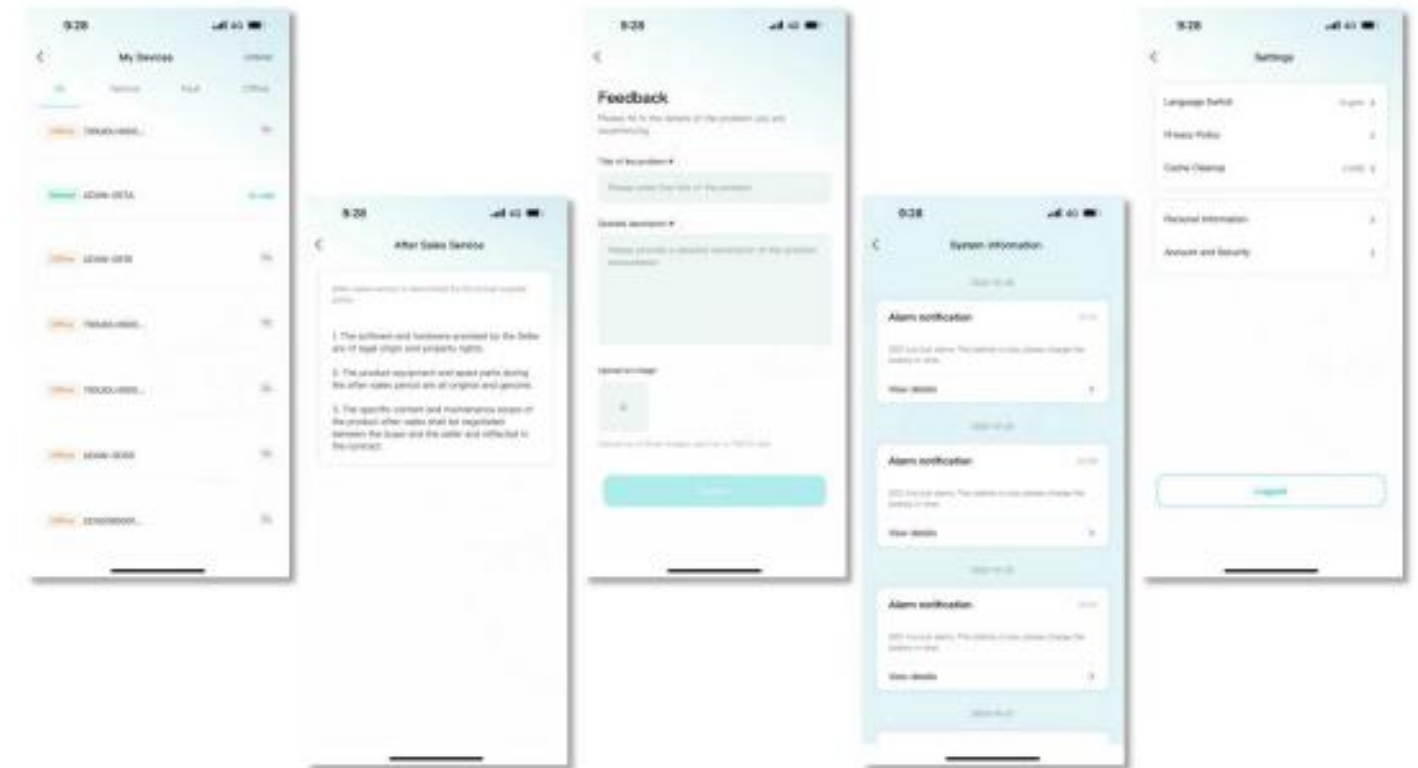
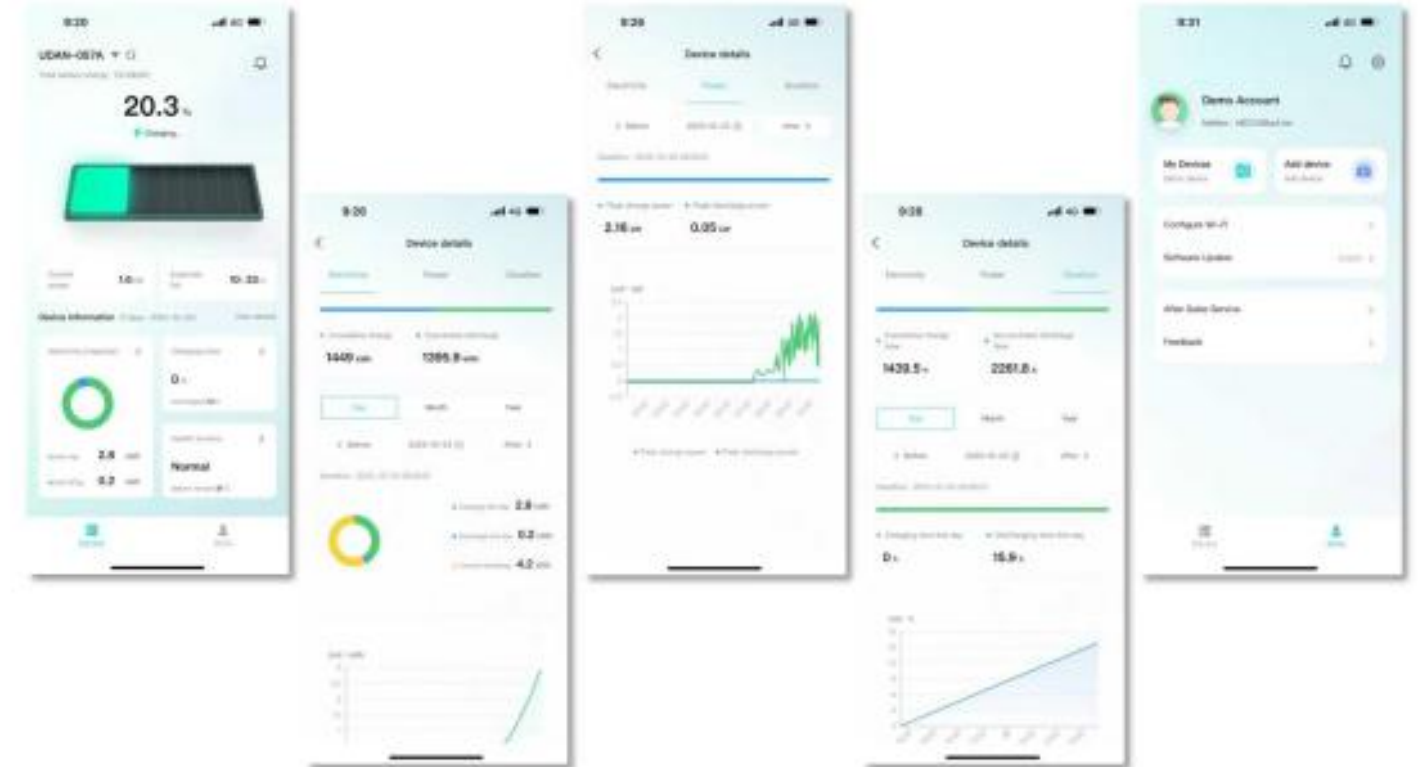
- Ensure the device is powered on.
- Turn on your mobile phone's Bluetooth and Wi-Fi (WLAN) functions.

## Connect to Wi-Fi (after the device is connected):

- Select the Wi-Fi network you wish to use and tap the "Connect" button.
- Enter the Wi-Fi password, then tap the "Finish" button to complete the network setup.



# APP INTERFACE DISPLAY



# SMART ENERGY STORAGE SOLUTION

Safer • Flexible • Reliable • High Performance • Eco-Friendly



## Safer

- Cobalt-free LFP battery: safe, long-life, high efficiency & energy density.
- Built-in intelligent BMS for full protection.



## Flexible

- LiFePO<sub>4</sub> + optional hybrid inverter.
- Single module: 6-11 cells.
- Max. 10 cabinets in parallel.



## Reliable

- IP54, fire protection, AC + fan cooling.
- Smart temp control (-20°C to 60°C), supports outdoor installation.



## High Performance

- 100A max discharge current.
- High rate – more load at the same cost.



## Eco-Friendly

- Non-toxic, pollution-free materials.



## Quality Assurance

- 5-year free warranty.



SAFE & SECURE



MODULAR & SCALABLE



INTELLIGENT THERMAL MANAGEMENT



HIGH PERFORMANCE OUTPUT



GREEN ENERGY SOLUTION



5-YEAR WARRANTY

Model	HV51.2V200Ah
Cell Chemistry	LiFePO <sub>4</sub>
Module Energy	10.2(kWh)
Module Nominal Voltage	51.2(V)
Module Capacity	200(Ah)
Module Dimension	396*575*248(W/D/H,mm)
Module Weight Approximate	77(kg)
Battery Module Qty in Series	6-11(Optional)
System Nominal Voltage	307.2-563.2(V)
System Operating Voltage	278.4-633.6(V)
System Energy	61.44-112.64(kWh)
System Usable Energy	55.3-101.38(kWh)
Charge/Discharge Current	Recommend: 50(A), Max: 100(A)
Working Temperature	-20~60°C
Cooling Mode	Air Conditioner
Communication Port	CAN, RS485
Humidity	5%~85%RH
Altitude	<2000m
IP Rating of Enclosure	IP54
DIMENSION&WEIGHT	Dimension 1394*1015*2164.5(W/D/H,mm)
Weight Approximate	965-1350(kg)
INSTALLATION & STORAGE	Installation Location Integrated cabinet Installation
Storage Temperature	0~35°C
RELIABILITY	Recommend Depth of Discharge 90%
Cycle Life	≥6000 times
Warranty	5 years
Certification	CE, MSDS, UN38.3

Note: The current is affected by temperature and SOC

# Compatible List of Inverters Brands

## 40~60VDC

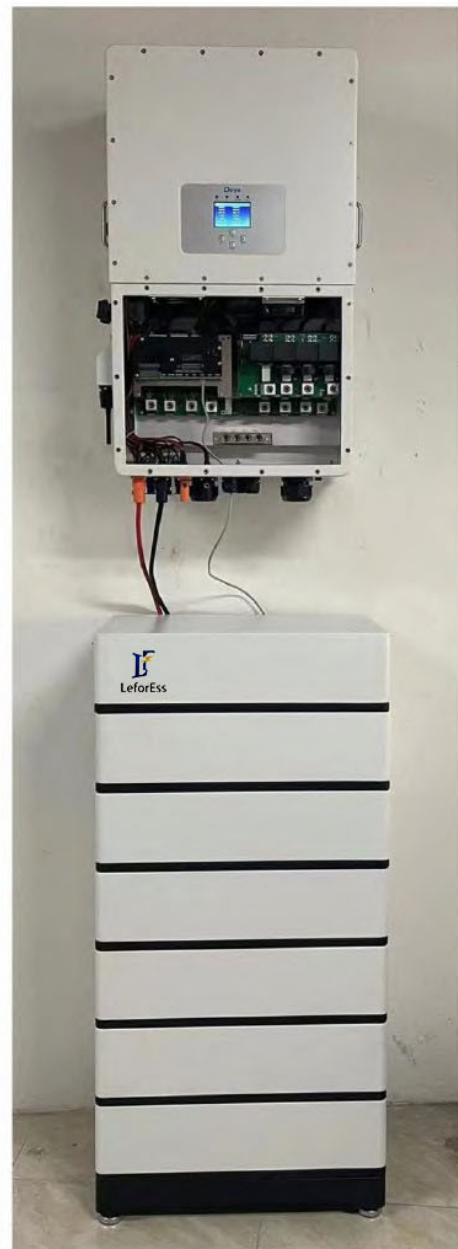


## 100~1500VDC





**Project Reference**



## GLOBAL SERVICES

